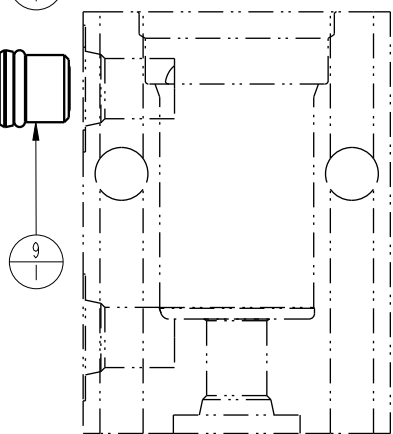
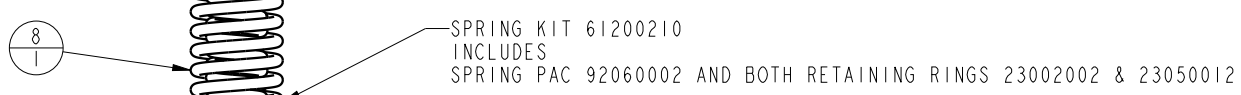
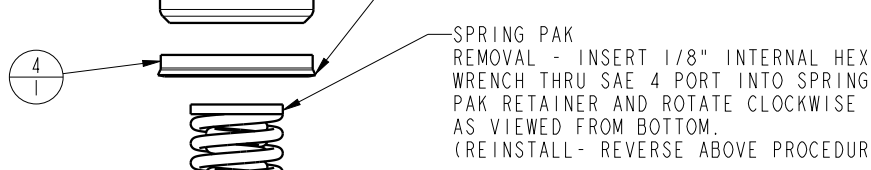
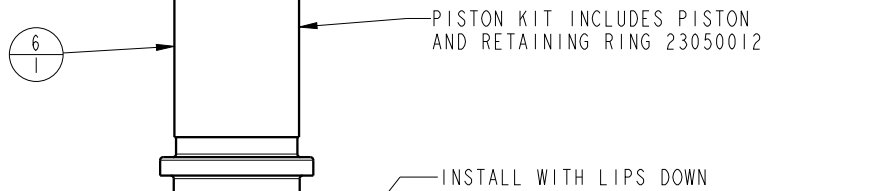
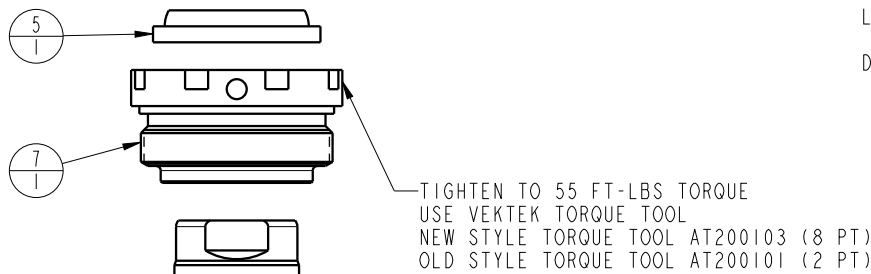


LUBRICATE ALL SEALS WITH CLEAN HYDRAULIC OIL PRIOR TO ASSEMBLY. DO NOT USE SILICONE BASED LUBRICANTS.



TIGHTEN SAE 4 SOCH PLUG AND SAE 4 BREATHER ASSEMBLY TO 7 FT-LBS TORQUE

N/A	N/A	61200210	KIT, SPRING	N/A	N/A	NOTED
N/A	N/A	6V200110	KIT, SEAL, FKM	N/A	NOTED	N/A
N/A	N/A	60200110	KIT, SEAL, STANDARD	NOTED	N/A	N/A
9	1	92090001	ASSY, BREATHER, SAE #4			
8	1	92060002	SPRING PAK,CYL,3900,1.0 STRK			X
7	1	82031002	GLAND,CYL, 3900 & 17.8 KN			
6	1	62201005	Kit,Piston, Ring&Tag,3900,1.0 STRK			
5	1	39012008	WIPER,SNAP-IN, (13/16)	X	X	
4	1	39010014	SEAL, BEVEL, 13/16 x 3/32 x 1	X	39012001	
3	1	30601144	PLUG, SOCH, SAE 4			
2	1	23050012	SNAP RING, INTERNAL			X
1	1	23002002	SNAP RING, INTERNAL			X
No.	QTY	PART No.	DESCRIPTION	Standard Seal Kit	FKM Seal Kit	Spring Kit

PARTS LIST



L	5499	RELEASE	NPETERS	9/23/24
REV	IN ACCORDANCE WITH ECN	EFFECTIVE DATE	REVISED BY	DATE
DRW BY:	JACOB	DRAWING STATUS: Released		
DATE:	08/06/90	PRODUCTION APPROVED FOR RELEASED STATUS ONLY		

ASSEMBLIES AFFECTED	PARTS LIST, ASSY,CYL,BB,3900,1.0 STRK,SA
20111001	
20111001F	
SIZE A	PL2052
REV L	

FORM FEG035_PL.ASIZE, REV. B